



Smithsonian

Smithsonian Chamber Music Society

2024-2025 Season



Friends of Music
Smithsonian Institution
P.O. Box 37012
NMAH 4100 / MRC 616
Washington, DC 20013-7012



Cover: Harpsichord from the Smithsonian collection by Niclaus de Guoco, Florence, 1694; Smithsonian photo by Jaclyn Nash

Smithsonian Chamber Music Society

2024-2025 Season



Kenneth Slowik
Artistic Director



A detail from the pinblock of the de Guoco harpsichord

The 48th SEASON of the SMITHSONIAN CHAMBER MUSIC SOCIETY features musical masterpieces from the late 16th century to the cusp of the 21st, played on some of the world's most highly prized musical instruments. Concerts (with the exception of the 16 March Smithsonian Chamber Orchestra evening) take place in the National Museum of American History's intimate Nicholas and Eugenia Taubman Hall of Music, with repertoire ranging from acclaimed masterpieces to undeservedly obscure gems by frequently overlooked composers. Veteran musicians of the Society will be joined on several of the programs by emerging artists. **Kenneth Slowik**, SCMS artistic director and recipient of the Smithsonian Distinguished Scholar Award, will again curate a series of pre-concert talks one hour prior to most of the programs, shedding light on the glorious music and the lives and times of the featured composers. In accordance with audience requests, several of the winter concerts this season will take place during daylight hours.

FOR MORE THAN FIVE DECADES, the Friends of Music at the Smithsonian has supported the activities of the Smithsonian Chamber Music Society at the National Museum of American History. Founded in 1971 by a handful of people interested in the Museum's unique series of concerts showcasing its outstanding collection of musical instruments, today the Friends of Music has a large and dedicated national membership. The support of the Friends for concerts, recordings, research, and the acquisition and conservation of instruments has made the Smithsonian Chamber Music Society the most ambitious and innovative museum program of its kind. Your contribution will underwrite research and the acclaimed performances that make the instruments of the Smithsonian's collection live and sing. It can help purchase and restore rare and beautiful musical instruments of historic significance. Further, your gift will enhance the Society's path-breaking education programs. Ten percent of each gift is deposited in the Friends of Music endowment fund, helping ensure that the goals of the Friends can continue in the future.

Become a Friend of Music at the Smithsonian and participate in the preservation of so much that is vital to our great cultural heritage. If you would like to make a donation, send a separate check to: Friends of Music, Smithsonian Institution, P.O. Box 37012, NMAH 4100 / MRC 616, Washington, DC 20013-7012 or visit smithsonianchambermusic.org.

Friends of Music at the Smithsonian

Axelrod String Quartet: Stradivarius and Amati

SMITHSONIAN CHAMBER MUSIC SOCIETY audiences are privy to the unparalleled experience of being able to hear two magnificent quartets of instruments—one made by Antonio Stradivari, the other by his teacher Nicolò Amati—in this popular four-concert series. The **Axelrod Quartet's** violist **James Dunham** will retire at the end of this season after 17 years with the ensemble, making these concerts simultaneously ones of fond farewell and exploration. In each of the first three programs, which probe the rich viola quintet repertoire, the quartet is joined by one of three different violists. Dunham has chosen the final quartet-only program to include some of the works he's most enjoyed playing over his long and distinguished career, which included membership in the Naumburg Award-winning Sequoia String Quartet and the Grammy Award-winning Cleveland quartet.



Milena Pajero-van der Stadt

Saturday 5 October 2024, 7:30 p.m.
Sunday 6 October, 6:30 p.m.
Schubert: Quartet in E-flat Major, D87
Mozart: Quintet in G Minor, K516
Brahms: Quintet in F Major, Op. 88
 with guest violist Milena Pajero-van der Stadt



Joan DerHovsepien

Saturday 14 December, 3:30 p.m.
Sunday 15 December, 3:30 p.m.
Schubert: Quartet in G Minor, D173
Mozart: Quintet in C Major, K515
Mendelssohn: Quintet in B-flat Major, Op. 87
 with guest violist Joan DerHovsepien



Steven Dann

Saturday 25 January 2025, 3:30 p.m.
Sunday 26 January, 3:30 p.m.
Schubert: Quartettsatz in C Minor, D703
Mozart: Quintet in D Major, K593
Bruckner: Quintet in F Major, WAB 112
 with guest violist Steven Dann

Saturday 3 May, 7:30 p.m.
Sunday 4 May, 6:30 p.m.
Mozart: Quartet in D Minor, K421/417b
Beethoven: Quartet in F Major, Op. 135
Ravel: Quartet in F Major

(L-R) Axelrod Quartet: Kenneth Slowik, *violoncello*; James Dunham, *viola*; Marc Destrubé & Mark Fewer, *violins*

Subscribers to the Axelrod Quartet are also invited to attend Haydn Day at the Smithsonian on Saturday 11 January 2025, beginning at 1:30 p.m. in the Taubman Hall of Music, when student and faculty members of the **2025 Smithsonian Haydn Quartet Academy** present a marathon concert of quartets from Haydn's Opp. 20 and 33. No reservations are required.

AXELROD QUARTET 4-CONCERT SERIES

SATURDAYS at 7:30 and 3:30 p.m.

Pre-concert talks one hour earlier; Code BPS2

SUNDAYS at 6:30 and 3:30 p.m.

Pre-concert talks one hour earlier; Code BPS3

Location: Nicholas and Eugenia Taubman Hall of Music; National Museum of American History, Constitution Avenue at 14th Street, NW (Metro: Federal Triangle)

Smithsonian Associates Members \$110
General Admission \$128

After the season opens, some individual concert tickets may be available: go online or call for pricing.

Masterworks of Five Centuries

This **chronologically wide-ranging series** begins in early November with the first of two appearances by the **Smithsonian Consort of Viols**, playing works by Elizabethan composers Orlando Gibbons and William Byrd. In mid-November, the **Smithsonian Chamber Players** offer a feast of sumptuous late-17th-century Austrian music by Heinrich Ignaz Franz Biber and Johann Schmelzer, followed in December by a program of Johann Sebastian Bach's sonatas for violin and obbligato harpsichord. The **Smithsonian Chamber Orchestra** concert in March, featuring baritone Mischa Bouvier, explores 20th-century works ranging from the elegiac (Busoni, Mahler, and Richard Strauss) to the transcendently hopeful (Golijov). The four-hands fortepiano team of Naoko Takao and SCMS director Kenneth Slowik presents a *Schubertiade* later the same month. To cap the series, the Smithsonian Consort of Viols returns with a selection of Jacobean chamber music by John Jenkins and William Lawes.

(L-R) Consort of Viols: Catherine Slowik, Ryan Cheng, Kenneth Slowik, Arnie Tanimoto & Chelsea Bernstein (above), *viols*

Edwin Huizinga



Manami Mizumoto



Webb Wiggins



Lily Schrantz



Lucas Harris



Rebecca Landell



Catherine Manson



Mischa Bouvier



Naoko Takao

Saturday 2 November 2024, 7:30 p.m.

Sunday 3 November, 3:30 p.m.

Music of Orlando Gibbons and William Byrd

Smithsonian Consort of Viols

Kenneth Slowik, Arnie Tanimoto, Ryan Cheng, Catherine Slowik, and Chelsea Bernstein, *viols*

Saturday 23 November, 3:30 p.m.

Sunday 24 November, 3:30 p.m.

Austrian Music from the Time of Leopold I
 by Heinrich Biber, Johann Schmelzer, and Johannes Schenck

Smithsonian Chamber Players

Edwin Huizinga & Manami Mizumoto, *violins*;
 Kenneth Slowik, Rebecca Landell, Catherine Slowik,
 Lily Schrantz, *viols*; Lucas Harris, *theorbo*;
 Webb Wiggins, *organ & harpsichord*

Saturday 7 December, 3:30 p.m.

Sunday 8 November, 3:30 p.m.

Johann Sebastian Bach

Sonatas for Violin and Obbligato Harpsichord

Catherine Manson, *violin*

Kenneth Slowik, *harpsichord*

Sunday 16 March 2025, 7:30 p.m.

Ferruccio Busoni, arr. Schönberg:

Berceuse élégiaque

Gustav Mahler, arr. Slowik: Kindertotenlieder

Richard Strauss: Metamorphosen

Oswaldo Golijov: Tenebrae

Smithsonian Chamber Orchestra

Mischa Bouvier, *baritone*

Kenneth Slowik, *conductor*

Saturday 29 March, 7:30 p.m.

Sunday 30 March, 6:30 p.m.

Music of Franz Schubert

Naoko Takao & Kenneth Slowik, *fortepiano*

Saturday 12 April, 7:30 p.m.

Sunday 13 April, 6:30 p.m.

Music of John Jenkins and William Lawes

Smithsonian Consort of Viols

Kenneth Slowik, Arnie Tanimoto, Ryan Cheng, Catherine Slowik & Chelsea Bernstein, *viols*

MASTERWORKS 6-CONCERT SERIES

NOTE: Both series include the 16 March concert, for which there is no pre-concert talk.

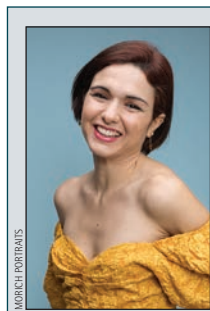
SATURDAYS at 7:30 and 3:30 p.m.; pre-concert talks one hour prior; Code BPS4

SUNDAYS at 6:30 and 3:30 p.m.; pre-concert talks one hour prior, except the 16 March performance; Code BPS5

Locations: Nicholas and Eugenia Taubman Hall of Music, National Museum of American History, Constitution Ave. at 14th St. NW (Metro: Federal Triangle); **except 16 March performance:** St. Mark's Capitol Hill, 301 A St. SE, Washington, DC 20003 (Metro: Capitol South)

Smithsonian Associates Members \$165
General Admission \$192

After the season opens, some individual concert tickets may be available: go online or call for pricing.



Patricia García Gil

Subscribers to the Masterworks series are also invited to attend a free concert on Saturday 12 October 2024, at 7:00 p.m. in the Baird Auditorium of the National Museum of Natural History, when the 2024 edition of the **Smithsonian Academy Orchestra**, conducted by Kenneth Slowik, presents music by Haydn and Beethoven with fortepiano soloist **Patricia García Gil**, artist-in-residence at the Cornell Center for Historical Keyboards at Cornell University. No reservations are required.

The Smithsonian Chamber Music Society is a program of the National Museum of American History, which seeks to create a just and compassionate future by exploring, preserving, and sharing the complexity of our past. Concerts are presented by Smithsonian Associates, the largest museum-based educational program in the world, which offers innovative, engaging programming that promotes learning, enrichment, and creativity for people of all ages. For more information about membership, visit smithsonianassociates.org. *Artists and programs subject to change.*

TICKETS: SmithsonianAssociates.org/chamber (no handling fee); 202-633-3030 (M-F; 10-3; \$3 handling fee per order)